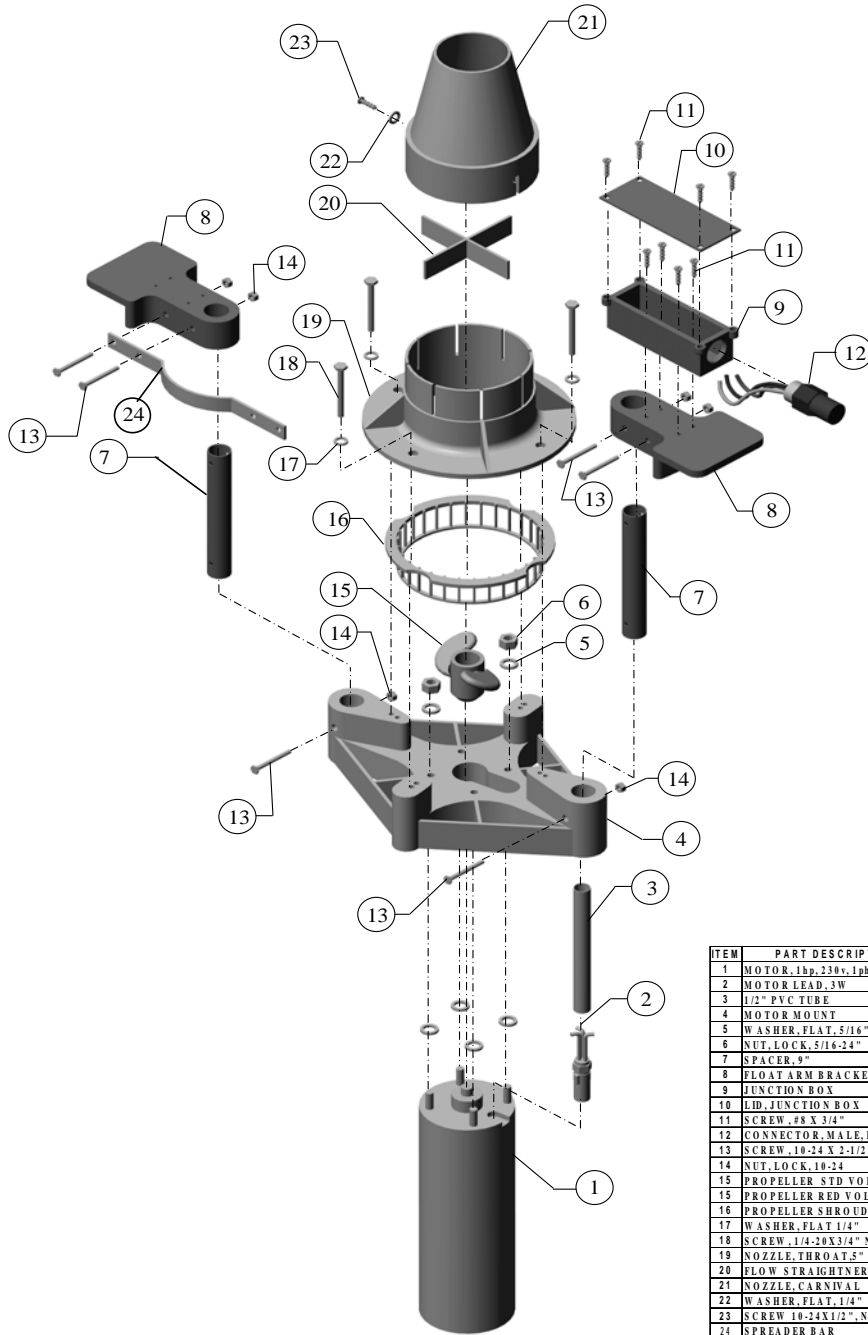


**FONT'N-AIRE READY
PROPELLER PUMP PARTS LIST**



ITEM	PART DESCRIPTION	QTY	PART NUMBER
1	MOTOR, 1hp, 230v, 1ph	1	4921450812
2	MOTOR LEAD, 3W	1	58152553905
3	1/2" PVC TUBE	16"	15PVC12
4	MOTOR MOUNT	1	04MMFAM
5	WASHER, FLAT, 5/16"	4	18079025
6	NUT, LOCK, 5/16-24"	4	18078500
7	SPACER, 9"	2	85SP9
8	FLOAT ARM BRACKET	2	22FABM
9	JUNCTION BOX	1	15JBM
10	LID, JUNCTION BOX	1	15JBL-FNA
11	SCREW, #8 X 3/4"	4	183182837
12	CONNECTOR, MALE, BH	1	15CN-32681
13	SCREW, 10-24 X 2-1/2"	6	181024250
14	NUT, LOCK, 10-24	6	18071NM10
15	PROPELLER STD VOL	1	70PSV49X275
15	PROPELLER RED VOL	1	70PRV46X275
16	PROPELLER SHROUD	1	70PGFNA
17	WASHER, FLAT 1/4"	4	18079020
18	SCREW, 1/4-20X3/4" NYLON	4	181010257SLL
19	NOZZLE, THROAT, 5"	1	04NTIM
20	FLOW STRAIGHTNER	1	22FS18
21	NOZZLE, CARNIVAL	1	04NCIM
22	WASHER, FLAT, 1/4"	2	18079020
23	SCREW 10-24X1/2", NYL	2	1810102550LL
24	SPREADER BAR	2	18SBFNA

01/01/08

FONT'-N-AIRE READY
 PROPELLER PUMP COMPONENTS

1/1/09

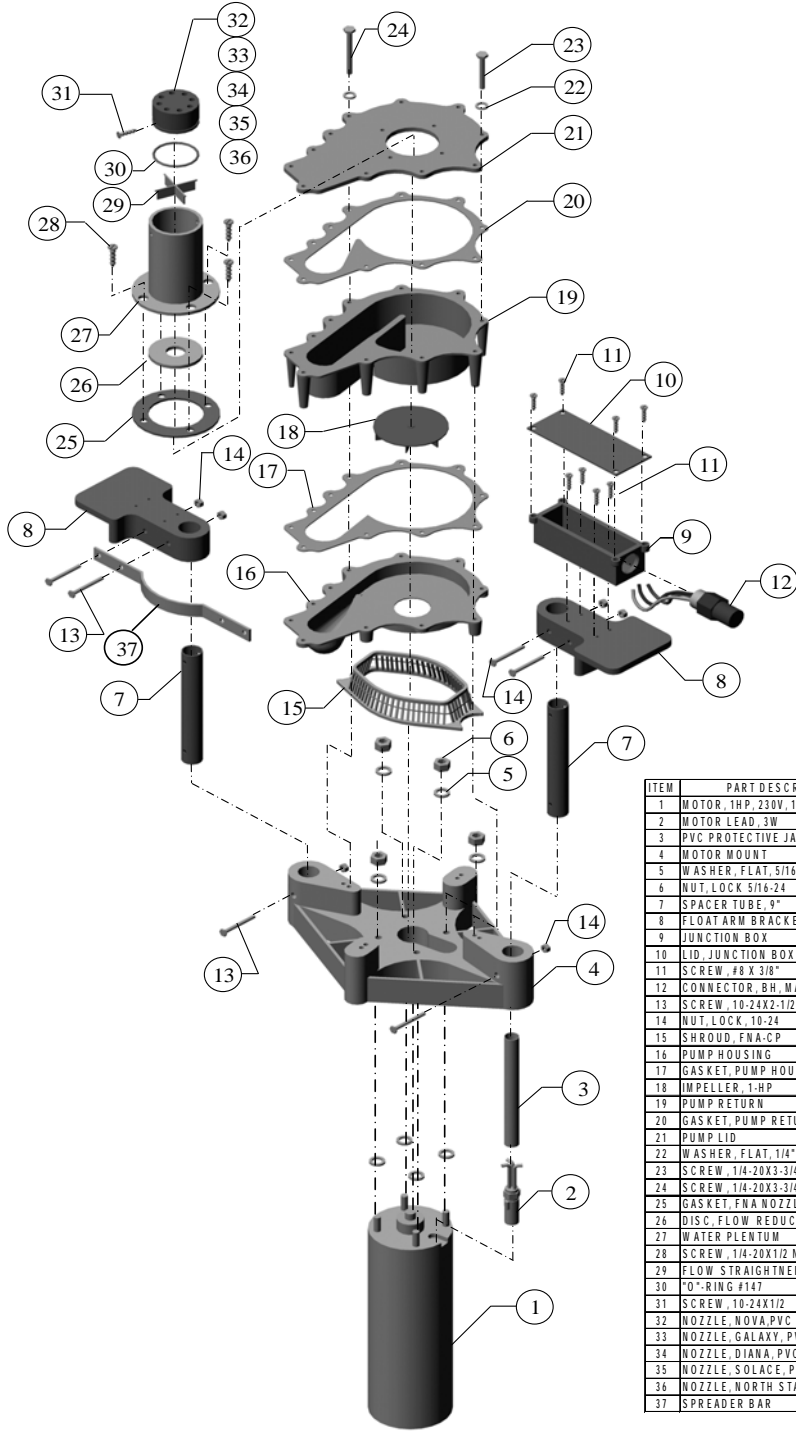
ITEM NO.	PART NUMBER	DESCRIPTION	PRICE
1	4921450812	MOTOR, 1HP, 230V, 1PH	395.00
2	58152553905	MOTOR LEAD (3 W)	60.00
3	15PVC12	1/2" PVC TUBE 16"	5.00
4	04MMFAIM	MOTOR MOUNT, INJECTION MOLDED	268.00
5	18079025	FLAT WASHER 5/16"	0.20
6	18078500	NUT, NYLON LOCK 5/16-24	0.40
7	85SP9	SPACER 9"	30.00
8	22FABIM	FLOAT ARM BRACKET	70.00
9	15JBIM	JUNCTION BOX	26.00
10	15JBL-FNA	LID, JUNCTION BOX	5.00
11	183182837	SCREW, #8X3/4"	0.20
12	15CN-32681	CONNECTOR BH MALE, 3W	70.00
13	181024250	SCREW, 10-24 X 2-1/2	3.35
14	18071NM10	NUT, LOCK, 10-24	0.50
15	70PSV49X275	PROPELLER, STANDARD VOLUME, 4.9 X 2.75	62.00
15	70PRV46X275	PROPELLER, REDUCED VOLUME, 4.6 X 2.75	62.00
16	70PGFNA	PROP SHROUD	8.00
17	18079020	WASHER, FLAT 1/4	0.20
18	1810102575LL	SCREW 1/4-20X3/4", NYLON	2.85
19	04NTIM	NOZZLE, THROAT 5"	165.00
20	22FS18	FLOW STRAIGHTNER	25.00
21	04NCIM	NOZZLE, CARNIVAL	165.00
22	18079020	WASHER, FLAT 1/4	0.20
23	1810102550LL	SCREW, 1/4-20X1/2", NYLON	2.30
24	18SBFNA	SPREADER BAR	25.00

FONT'N-AIRE READY
 PROPELLER PUMP SUB ASSY.

1/1/09

PART NO.	DESCRIPTION	PRICE
90DSAFNA	DRIVE STRUCTURE FNA ASSY. (ITEMS 2-14)	700.00
90NACARIM	CARNIVAL NOZZLE ASSY. (ITEMS 16-23)	325.00
90MLA4	MOTOR LEAD ASSY, W, W/PVC & WIRE NUTS	70.00
90FA40	FLOAT 40"	385.00
94RC	ROCK COVER	632.00
90ELCI26140	EQUIPMENT LOSS INTERRUPTOR, 230V	95.00
90TR221-3	TIME SWITCH 240V, NEMA 3R	150.00
5828240850	CONTROL BOX (FRANKLIN) 1/230/1	160.00
15A16P14	MOUNTING PLATE, NEW PLATE	95.00
90PP1230R	PROPELLER PUMP ASSY, 1HP, 230V, 1PH, REDUCED	1,500.00
90PP1230S	PROPELLER PUMP ASSY, 1HP, 230V, 1PH, STANDARD	1,500.00
90RECP1230	CONTROL PANEL, READY W/O ENCLOSURE	645.00
94ECP12301	ETL CONTROL PANEL W/ENCLOSURE	1,110.00

**FONT'N-AIRE READY
CENTRIFUGAL PUMP PARTS LIST**



ITEM	PART DESCRIPTION	QTY	PART NUMBER
1	MOTOR, 1HP, 230V, 1PH	1	4921450812
2	MOTOR LEAD, 3W	1	58152553905
3	PVC PROTECTIVE JACKET, 16"	1	15PVC12
4	MOTOR MOUNT	1	04MMFAM
5	WASHER, FLAT, 5/16"	4	18079025
6	NUT, LOCK 5/16-24	4	18078500
7	SPACER TUBE, 9"	2	85SP9
8	FLOAT ARM BRACKET	2	22FABIM
9	JUNCTION BOX	1	15JBM
10	LID, JUNCTION BOX	1	15JBL-FNA
11	SCREW, #8 X 3/8"	8	183182837
12	CONNECTOR, BH, MALE	1	15CN-32481
13	SCREW, 10-24X2-1/2"	6	181024250
14	NUT, LOCK, 10-24	6	18071NM10
15	SHROUD, FNA-CP	1	70PGFNACP
16	PUMP HOUSING	1	64PH-PIMG
17	GASKET, PUMP HOUSING	1	64PHG2
18	IMPELLER, 1-HP	1	70CPIM1
19	PUMP RETURN	1	64PR-PIMG
20	GASKET, PUMP RETURN	1	64PRG2
21	PUMP LID	1	64PRL-PIMG
22	WASHER, FLAT, 1/4"	11	18079020
23	SCREW, 1/4-20X3-3/4" W/LOCK	7	18101025275LL
24	SCREW, 1/4-20X3-3/4" W/LOCK	4	18101025375LL
25	GASKET, FNA NOZZLE	1	64GFN
26	DISC, FLOW REDUCTION	1	64FRD
27	WATER PLENUM	1	64WP-PCP
28	SCREW, 1/4-20X1/2 NYLON	4	1810102550LL
29	FLOW STRAIGHTNER (CP)	1	64FSCP
30	O-RING #147	1	29OR147
31	SCREW, 10-24X1/2	2	18032200
32	NOZZLE, NOVA, PVC	1	67MPVCGNOV
33	NOZZLE, GALAXY, PVC	1	67MPVCGGAL
34	NOZZLE, DIANA, PVC	1	67MPVCGDI
35	NOZZLE, SOLACE, PVC	1	67MPVCGSOL
36	NOZZLE, NORTH STAR, PVC	1	67MPVCGNST
37	SPREADER BAR	2	185BFNA

FONT'N-AIRE READY
CENTRIFUGAL PUMP COMPONENTS

1/1/09

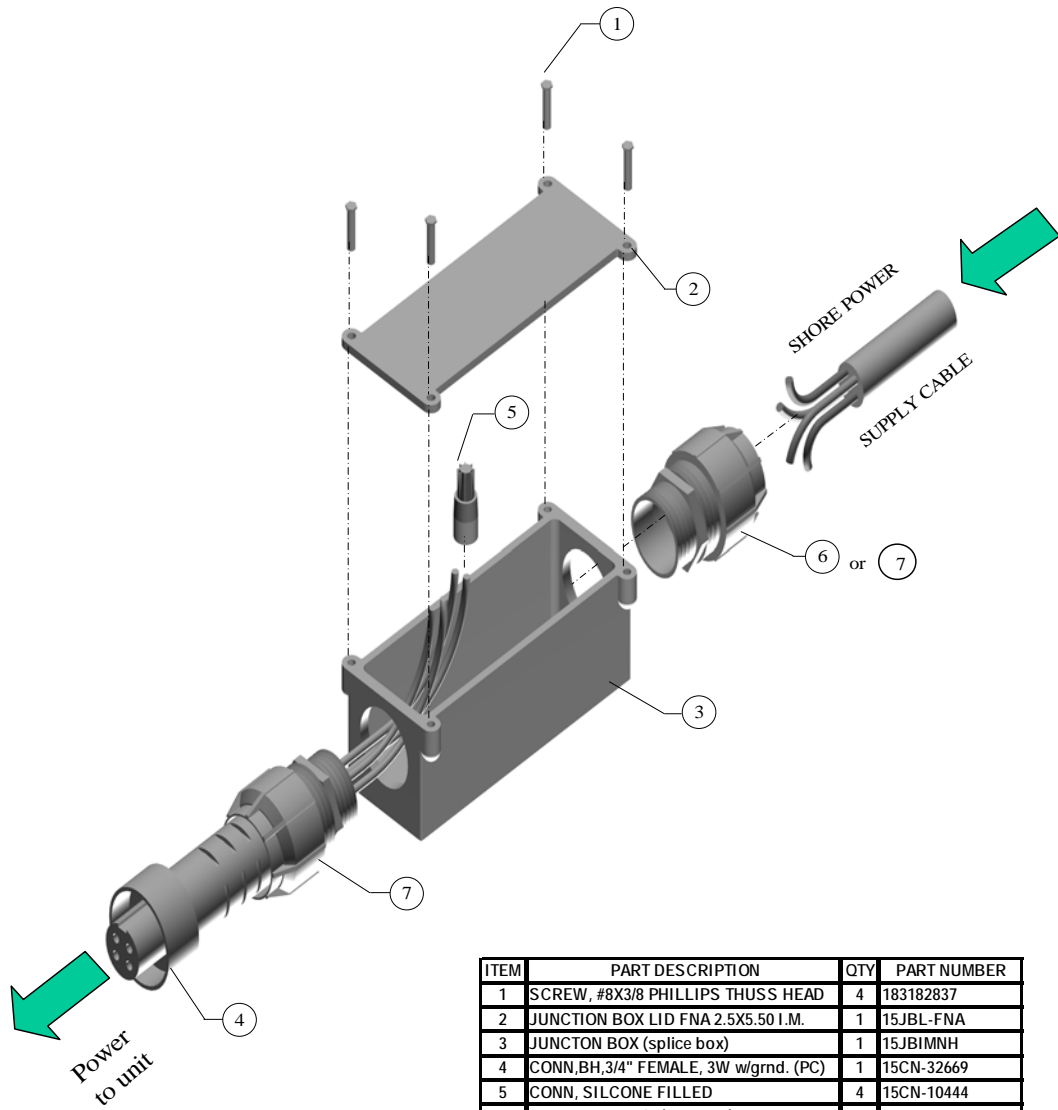
ITEM NO.	PART NUMBER	DESCRIPTION	PRICE
1	4921450812	MOTOR, 1HP, 230V, 1PH	395.00
2	58152553905	MOTOR LEAD (3W)	60.00
3	15PVC12	1/2" PVC TUBE 15"	5.00
4	04MMFAIM	MOTOR MOUNT	268.00
5	18079025	FLAT WASHER 5/16	0.20
6	18078500	NUT, NYLON LOCK 5/16-24	0.40
7	85SP9	SPACER 9"	30.00
8	22FABIM	FLOAT ARM BRACKET	70.00
9	15JBIM	JUNCTION BOX	26.00
10	15JBL-FNA	LID, JUNCTION BOX	5.00
11	183182837	SCREW, #8X3/4"	0.20
12	15CN-32681	CONNECTOR BH MALE, 3W	70.00
13	181024250	SCREW, 10-24 X 2-1/2	3.35
14	18071NM10	NUT, LOCK, 10-24	0.50
15	70PGFNACP	PROP SHROUD	8.00
16	64PH-PIMG	PUMP HOUSING	90.00
17	64PHG2	GASKET, PUMP HOUSING	8.75
18	70CPIM1	IMPELLER ASSEMBLY, 1HP	62.00
19	64PR-PIMG	PUMP RETURN	90.00
20	64PRG2	GASKET, PUMP RETURN	8.75
21	64PRL-PIMG	PUMP LID	65.00
22	18079020	FLAT WASHER 1/4"	0.20
23	18101025275LL	SCREW, HHCS, 1/4-20X2-3/4"w/lock	2.85
24	18101025375L	SCREW, 1/4-20 X 3-3/4 W/LOCK	3.90
25	64GFN	GASKET, FNA NOZZLE	6.75
26	64FRD	DISC, FLOW REDUCER	3.00
27	64WPCP	WATER PLENUM	26.00
28	1810102550LL	SCREW, 1/4-20X1/2 NYLON	2.30
29	64FSCP	FLOW STRAIGHTNER (CP)	7.75
30	29OR147	"O" RING #147	1.60
31	18032200	SCREW, 10-24X1/2	0.20
32	67MPVCNOV	NOZZLE, NOVA	128.00
33	67MPVCGAL	NOZZLE, GALAXY	128.00
34	67MPVCDI	NOZZLE, DIANA	128.00
35	67MPVCSOL	NOZZLE, SOLACE	128.00
36	67MPVCNST	NOZZLE, NORTH STAR	128.00
37	18SBFNA	SPREADER BAR	25.00

FONT'N-AIRE READY
CENTRIFUGAL PUMP SUB. ASSY.

1/1/09

PART NO.	DESCRIPTION	PRICE
90DSAFNA	DRIVE STRUCTURE FNA ASSY. (ITEMS 2-14)	700.00
90CPA1	CENTRIFUGAL PUMP ASSY. 1HP (ITEMS 15-24)	370.00
90NAPVCDIA	DIANA NOZZLE ASSY., PVC (ITEMS 30, 31 & 34)	130.00
90NAPVCGAL	GALAXY NOZZLE ASSY., PVC & HARDWARE	130.00
90NAPVCNOR	NORTH STAR NOZZLE ASSY.PVC (ITEMS 30, 31 & 36)	130.00
90NAPVCNOV	NOVA NOZZLE ASSY., PVC (ITEMS 30, 31 & 32)	130.00
90NAPVCSOL	SOLACE NOZZLE ASSY., PVC (ITEMS 30, 31 & 35)	130.00
90WPAFRD	WATER PLENUM ASSY W/FRD (ITEMS 25-29)	55.00
90MLA4	MOTOR LEAD ASSY, 3W, W/PVC & WIRE NUTS	70.00
90FA40	FLOAT 40"	385.00
94RC	ROCK COVER	632.00
90ELCI26140	EQUIPMENT LOSS INTERRUPTOR, 230V	95.00
90TR221-3	TIME SWITCH 230V, NEMA 3R	150.00
5828240850	CONTROL BOX, 1-HP, 230V, 1PH	160.00
15A16P14	MOUNTING PLATE, NEW PLATE	95.00
90CP1230R	CENTRIFUGAL PUMP ASSY, 1HP, 230V, 1PH, REDUCED	1,550.00
90CP1230S	CENTRIFUGAL PUMP ASSY, 1HP, 230V, 1PH, STANDARD	1,550.00
***NOTE: ASSEMBLY INCLUDES MOTOR, DRIVE STRUCTURE, PUMP & NOZZLE OF YOUR CHOICE (ITEMS 1-37)		
	LESS, FLOAT, WIRE & CONTROLS	
90RECP1230	CONTROL PANEL, READY W/O ENCLOSURE	645.00
94ECP12301	ETL CONTROL PANEL W/ENCLOSURE	1,110.00

SPLICE BOX ASSEMBLY
90SPBA3W
FOR 3 WIRE MOTOR



ITEM	PART DESCRIPTION	QTY	PART NUMBER
1	SCREW, #8X3/8 PHILLIPS THUSS HEAD	4	183182837
2	JUNCTION BOX LID FNA 2.5X5.50 I.M.	1	15JBL-FNA
3	JUNCTON BOX (splice box)	1	15JBIMNH
4	CONN,BH,3/4" FEMALE, 3W w/grnd. (PC)	1	15CN-32669
5	CONN, SILCONE FILLED	4	15CN-10444
6	CONNECTOR, 3/4 (.310-.560)	1	15CC-2931NM
7	CONNECTOR, 3/4 (.500-.750)	1	15CC-2932NM

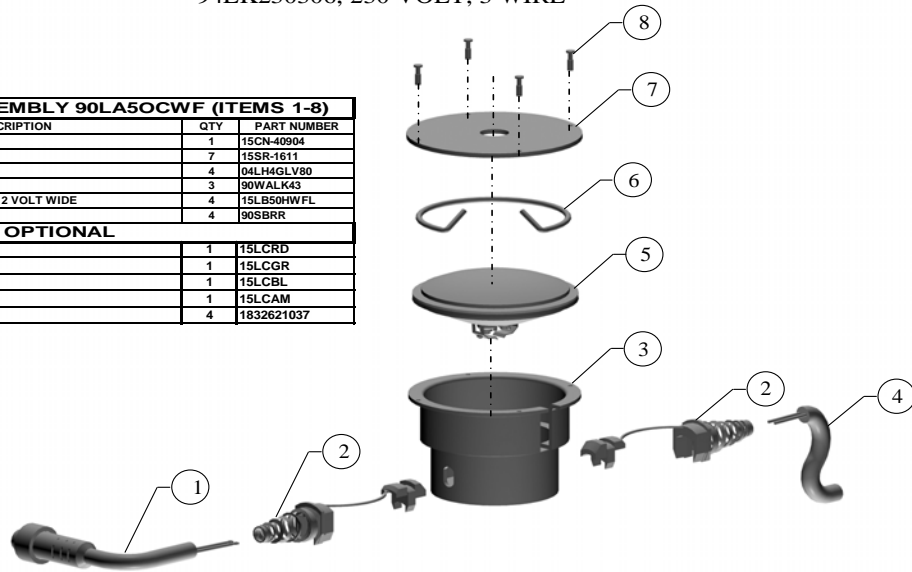
FONT'N-AIRE READY WIRE ASSEMBLIES

1/1/09

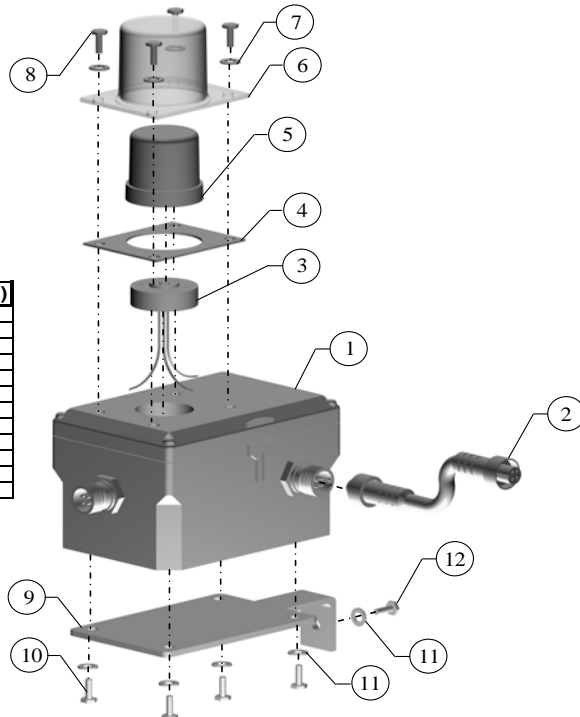
PART NUMBER	DESCRIPTION	PRICE
90WA10012BH	WIRE ASSY., 100', 12/4 SJEOW, w/BH CONN. & SPLICE BOX	385.00
90WA15012BH	WIRE ASSY., 150', 12/4 SJEOW, w/BH CONN. & SPLICE BOX	497.50
90WA20012BH	WIRE ASSY., 200', 12/4 SJEOW, w/BH CONN. & SPLICE BOX	610.00
90WA25012BH	WIRE ASSY., 250', 12/4 SJEOW, w/BH CONN. & SPLICE BOX	722.50
90WA30012BH	WIRE ASSY., 300', 12/4 SJEOW, w/BH CONN. & SPLICE BOX	835.00
90WA35012BH	WIRE ASSY., 350', 12/4 SJEOW, w/BH CONN. & SPLICE BOX	947.50
90WA40012BH	WIRE ASSY., 400', 12/4 SJEOW, w/BH CONN. & SPLICE BOX	1,060.00
90WA10010BH	WIRE ASSY., 100', 10/4 SEOW, w/BH CONN. & SPLICE BOX	510.00
90WA15010BH	WIRE ASSY., 150', 10/4 SEOW, w/BH CONN. & SPLICE BOX	705.00
90WA20010BH	WIRE ASSY., 200', 10/4 SEOW, w/BH CONN. & SPLICE BOX	900.00
90WA25010BH	WIRE ASSY., 250', 10/4 SEOW, w/BH CONN. & SPLICE BOX	1,095.00
90WA30010BH	WIRE ASSY., 300', 10/4 SEOW, w/BH CONN. & SPLICE BOX	1,290.00
90WA35010BH	WIRE ASSY., 350', 10/4 SEOW, w/BH CONN. & SPLICE BOX	1,485.00
90WA40010BH	WIRE ASSY., 400', 10/4 SEOW, w/BH CONN. & SPLICE BOX	1,680.00
	SEE SPLICE BOX ASSEMBLY, PAGE 7	
183182837	SCREW, #8X3/8, PHILLIPS TRUSS HEAD	0.20
15JBL-FNA	JUNCTION BOX LID, FNA, 2.5 X 5.50 I.M.	5.00
15JBIMNH	JUNCTION BOX (SPLICE BOX)	26.00
15CN-32669	CONNECTOR, BH, FEMALE, 3W w/grnd (PC)	145.00
15CN-10444	CONNECTOR, SILICONE FILLED	2.50
15CC-2931NM	CORD CONNECTOR, 3/4", (.310-.560) (FOR 12/4 WIRE)	15.00
15CC-2932NM	CORD CONNECTOR, 3/4". (.500-.750) (FOR 10/4 WIRE)	15.00
90CN32669	FEMALE BH CONN. ASSY. W/WIRE NUTS	155.00
90SPBA3W	SPLICE BOX ASSY., w/BH CONN.	185.00
15SJEOW12-4	WIRE, 12/4, SJEOW (price per ft.)	2.95
15SEOW10-4	WIRE, 10/4, SEOW (price per ft.)	4.90

LIGHT KIT ASSEMBLY PARTS LIST
94LK230306, 230 VOLT, 3 WIRE

LIGHT STRING ASSEMBLY 90LA50CWF (ITEMS 1-8)			
ITEM	PART DESCRIPTION	QTY	PART NUMBER
1	CONN., BH., 12-VOLT, MALE	1	15CN-40904
2	STRAIN RELIEF LIGHT HOUSING	7	15SR-1611
3	LIGHT HOUSING, GLV80	4	04LH4GLV80
4	WIRE ASSY. LIGHT KIT, 14/2 (43")	3	90WALK43
5	HALOGEN SEAL BEAM 50 WATT, 12 VOLT WIDE	4	15LB50HWFL
6	SEAL BEAM RETAINING RING, SS	4	90SBRR
OPTIONAL			
7	LENS COVER (RED)	1	15LCRD
7	LENS COVER (GREEN)	1	15LCGR
7	LENS COVER (BLUE)	1	15LCBL
7	LENS COVER (AMBER)	1	15LCAM
8	LENS RETAINING FASTNER	4	1832621037



LIGHT TRANSFORMER ASSEMBLY 90TXA230306 (ITEMS 1-12)			
ITEM	PART DESCRIPTION	QTY	PART NUMBER
1	TRANSFORMER PACK, 230-12,3W	1	90TP230306
2	CONN., BH., 3/4" DOUBLE ENDED	1	15CN-6F020
3	PHOTO CELL SOCKET	1	15PC-K122
4	GASKET, WATER SHIELD	1	29GWSC
5	PHOTO CELL	1	15PC5007S
6	WATER SHIELD COVER	1	04WSC
7	WASHER, 1/4", FLAT	4	18079020
8	SCREW, HHCS, 1/4-20X1/2	4	1810102550LL
9	POWER PACK MOUNTING BRACKET	1	15MBLT
10	SCREW, 1/4-20X1/2" PHILLIPS HEAD	4	1830622550LL
11	WASHER, 1/4", FLAT	5	18079020
12	SCREW, 1/4-20X3/4", PHILLIPS HEAD	1	1830622575LL



LIGHT KIT COMPONENTS, 230-V 3 WIRE

1/1/09

ITEM NO.	PART NUMBER	DESCRIPTION	PRICE
	90LA50CWF	LIGHT ASSY., WIDE FLOOD, (items 1-8)	515.00
1	15CN-40904	CONN, BH, 12-VOLT, MALE	60.00
2	15SR-1611	STRAIN RELIEF LIGHT HOUSING	3.00
3	04LH4GLV80	LIGHT HOUSING, GLV80	60.00
4	90WALK43	WIRE ASSY, LIGHT KIT, 14/2 (43")	25.00
5	15LB50HWFL	HALOGEN SEAL BEAM 50 WATT, 12 VOLT, WIDE	30.00
6	90SBRR	SEAL BEAM RETAINING RING, SS	8.00
7	15LCRD	LENS COVER (RED)	8.00
7	15LCGR	LENS COVER (GREEN)	8.00
7	15LCBL	LENS COVER (BLUE)	8.00
7	15LCAM	LENS COVER (AMBER)	8.00
8	1832621037	LENS RETAINING FASTNER	0.50
	90TXA230306	LIGHT TRANSFORMER ASSY (ITEMS 1-12)	1235.00
1	90TP230306	TRANSFORMER PACK, 230-12, 3W	910.00
2	15CN-6F020	CONN, BH, 3/4" DOUBLE ENDED	185.00
3	15PC-K122	PHOTO CELL SOCKET	55.00
4	29GWSC	GASKET, WATER SHIELD	8.00
5	15PC5007S	PHOTO CELL	40.00
6	04WSC	WATER SHIELD COVER	30.00
7	18079020	WASHER, 1/4", FLAT	0.20
8	1810102550LL	SCREW, HHCS, 1/4-20X1/2	2.30
9	15MBLT	POWER PACK MOUNTING BRACKET	30.00
10	1830622550LL	SCREW, 1/4-20X1/2", PHILLIPS HEAD	2.50
11	18079020	WASHER, 1/4", FLAT	0.20
12	1830622575LL	SCREW, 1/4-20X3/4", PHILLIPS HEAD	2.85
	90WSC	WATER SHIELD COVER ASSY (ITEMS 4, 6-8)	48.00
	90LCRP	LENS COVER RETAINING FASTENER KIT (16 FASTENER)	8.00
	90CLC-SET	LENS COVER SET, ONE EACH COLOR	40.00
	90CLC-AMP	LENS COVER, AMBER WITH RETAINING FASTENER	10.00
	90CLC-BLP	LENS COVER, BLUE WITH RETAINING FASTENER	10.00
	90CLC-GRP	LENS COVER, GREEN WITH RETAINING FASTENER	10.00
	90CLC-RDP	LENS COVER, RED WITH RETAINING FASTENER	10.00