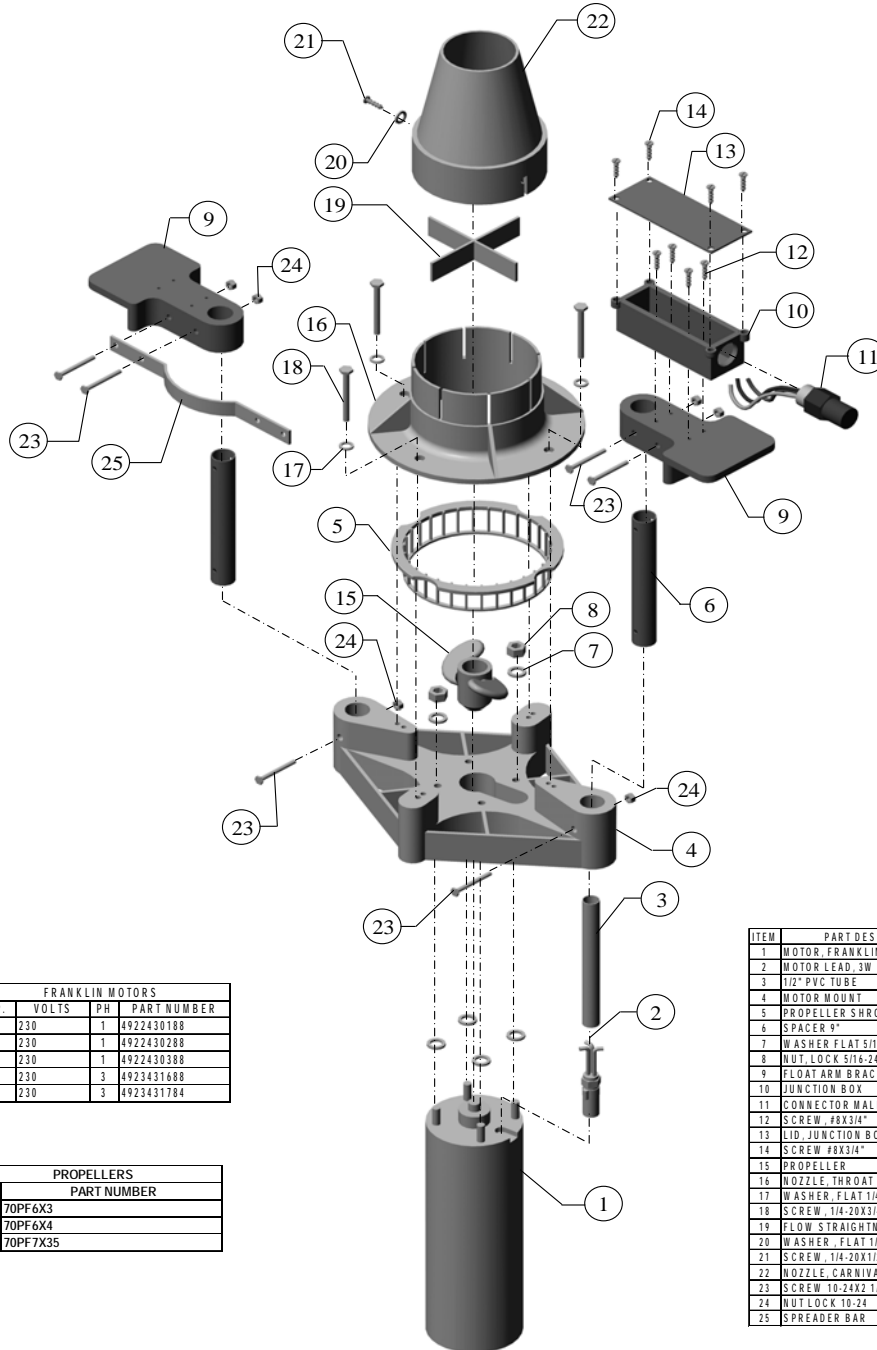


FONT'N-AIRE PLATINUM PROPELLER PUMP PARTS LIST



FRANKLIN MOTORS			
H.P.	VOLTS	PH	PART NUMBER
2	230	1	4922430188
3	230	1	4922430288
5	230	1	4922430388
3	230	3	4923431688
5	230	3	4923431784

PROPELLERS	
H.P.	PART NUMBER
2	70PF6X3
3	70PF6X4
5	70PF7X35

ITEM	PART DESCRIPTION	QTY	PART NUMBER
1	MOTOR, FRANKLIN	1	SEE LISTING
2	MOTOR LEAD, 3W	1	50152553905
3	1/2" PVC TUBE	16"	15PVC12
4	MOTOR MOUNT	1	04MMF4IM
5	PROPELLER SHROUD	1	70PGFNA
6	SPACER 9"	2	855PP
7	WASHER FLAT 5/16	4	18079025
8	NUT, LOCK 5/16-24	4	18078500
9	FLOAT ARM BRACKET	2	22FABIM
10	JUNCTION BOX	1	15J8IM
11	CONNECTOR MALE BH	1	15CN-32681
12	SCREW, #8X3/4"	4	183182837
13	LID, JUNCTION BOX	1	15J8L-FNA
14	SCREW, #8X3/4"	4	183182837
15	PROPELLER	1	SEE LISTING
16	NOZZLE THROAT 5"	1	04NTM
17	WASHER, FLAT 1/4"	4	18079020
18	SCREW, 1/4-20X3/4" NYLON	4	1810102575LL
19	FLOW STRAIGHTNER	1	22FS18
20	WASHER, FLAT 1/4"	2	18079020
21	SCREW, 1/4-20X1/2" NYLON	2	1810102550LL
22	NOZZLE, CARNIVAL	1	04NCIM
23	SCREW, 10-24X2 1/2	6	181024250
24	NUT, LOCK 10-24	6	18071NM10
25	SPREADER BAR	2	185BFNA

01/01/08

FONT'N-AIRE PLATINUM PROPELLER PUMP COMPONENTS

1/1/09

ITEM NO.	PART NUMBER	DESCRIPTION	PRICE
1	MOTOR	SEE MOTOR PRICE SHEET (pg. 002)	0.00
2	58152553905	MOTOR LEAD (3 W)	60.00
3	15PVC12	1/2" PVC TUBE 16"	5.00
4	04MMFAIM	MOTOR MOUNT, INJECTION MOLDED	268.00
5	70PGFNA	PROP SHROUD	8.00
6	85SP9	SPACER 9"	30.00
7	18079025	FLAT WASHER 5/16"	0.20
8	18078500	NUT, NYLON LOCK 5/16-24	0.40
9	22FABIM	FLOAT ARM BRACKET	70.00
10	15JBIM	JUNCTION BOX	26.00
11	15CN-32681	CONNECTOR BH MALE	70.00
12	183182837	SCREW, #8X3/8" PHILLIPS TRUSS HD.	0.20
13	15JBL-FNA	LID, JUNCTION BOX	5.00
14	183182837	SCREW, #8 x 3/8 PHILLIPS TRUSS HD.	0.20
15	PROPELLER	SEE PROPELLER PRICE SHEET (pg. 003)	0.00
16	04NTIM	NOZZLE, THROAT 5"	165.00
17	18079020	WASHER, FLAT 1/4	0.20
18	1810102575LL	SCREW 1/4-20X3/4", NYLON	2.85
19	22FS18	FLOW STRAIGHTNER	25.00
20	18079020	WASHER, FLAT 1/4	0.20
21	1810102550LL	SCREW, 1/4-20X1/2", NYLON	2.30
22	04NCIM	NOZZLE, CARNIVAL	165.00
23	181024250	SCREW, 10-24 X 2-1/2	3.35
24	18071NM10	NUT, LOCK, 10-24	0.50
25	18SBFNA	SPREADER BAR	25.00

FONT'N-AIRE PLATINUM
PROPELLER PUMP SUB. ASSY.

1/1/09

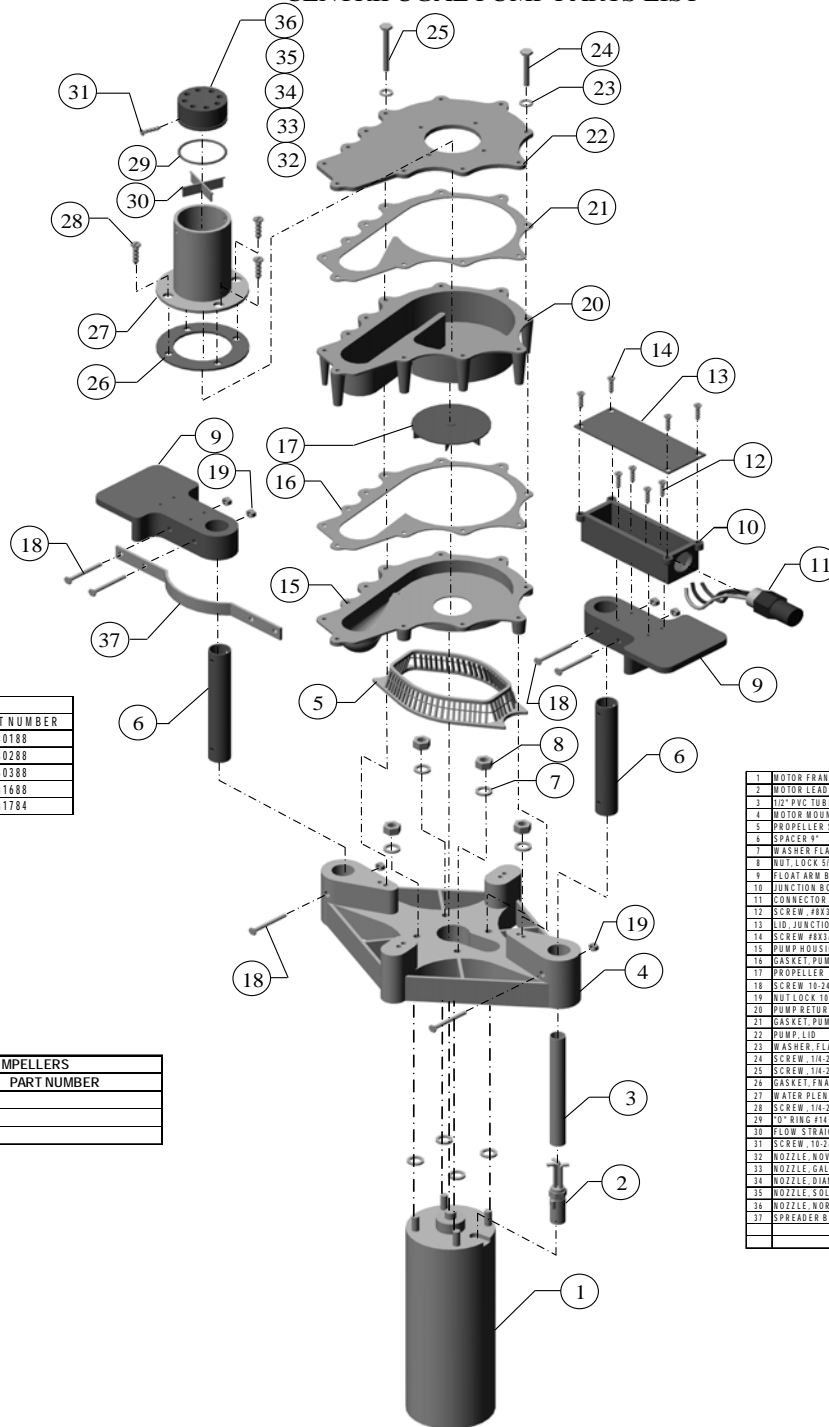
PART NO.	DESCRIPTION	PRICE
90DSA-FNASF	DRIVE STRUCTURE FNA ASSY, SF (ITEMS 3, 4 & 6-14 & 23-25)	700.00
90NACARIM	CARNIVAL NOZZLE ASSY. (ITEMS 5 & 16-22)	325.00
90MLA4	MOTOR LEAD ASSY, 3W, W/PVC & WIRE NUTS	70.00
90FA40	FLOAT 40"	385.00
94RC	ROCK COVER	632.00

FONT'N-AIRE PLATINUM PROPELLER PUMP POWER DRIVE ASSEMBLIES

1/1/09

P/N	DESCRIPTION	PRICE
90PP202301	PROPELLER PUMP, 2/230/1 (PD)	2,270.00
90PP302301	PROPELLER PUMP, 3/230/1 (PD)	2,470.00
90PP502301	PROPELLER PUMP, 5/230/1 (PD)	2,700.00
90PP302303	PROPELLER PUMP, 3/230/3 (PD)	2,470.00
90PP502303	PROPELLER PUMP, 5/230/3 (PD)	2,700.00
***NOTE: ASSEMBLY INCLUDES MOTOR, PROPELLER, DRIVE STRUCTURE & NOZZLE (ITEMS 1-24)		
LESS FLOAT, WIRE & CONROLS		

FONT'N-AIRE PLATINUM CENTRIFUGAL PUMP PARTS LIST



FRANKLIN MOTORS			
H.P.	VOLTS	PH	PART NUMBER
2	230	1	4922430188
3	230	1	4922430288
5	230	1	4922430388
3	230	3	4923431688
5	230	3	4923431784

IMPELLERS	
H.P.	PART NUMBER
2	70CPIM2
3	70CPIM3
5	70CPIM5

1	MOTOR FRANKLIN	1	SEE LISTING
2	MOTOR LEAD .3W	1	8B15353905
3	1/2" PVC TUBE	16"	155PVC12
4	MOTOR MOUNT	1	64MPM10
5	PROPELLER SHROUD	1	70PGEFNACP
6	SPACER 1/4"	2	185SP1
7	WASHER FLAT 5/16	4	180719025
8	NUT LOCK 5/16-24	4	180785950
9	FLOAT ARM BRACKET	2	127FARM
10	JUNCTION BOX	1	151JB10
11	CONNECTOR MALE BH	1	15CN-32481
12	SCREW .88X3/4"	4	1807182837
13	1/2" JUNCTION BOX	1	155JB-1/2"
14	SCREW .88X3/4"	4	1807182837
15	PUMP HOUSING	1	64PR-P1MG
16	GASKET PUMP HOUSING	1	64PRG2
17	PROPELLER	1	SEE LISTING
18	SCREW 10-24X2 1/2	6	1807024250
19	NUT LOCK 10-24	6	180718M10
20	PUMP RETURN	1	64PR-P1MG
21	GASKET PUMP RETURN	1	64PRG1
22	PUMP LID	1	64PLR-P1MG
23	WASHER FLAT 1/4"	11	180719020
24	SCREW 1/4-20X2-3/4 W/LOCK	7	180701025275LL
25	SCREW 1/4-20X3-3/4 W/LOCK	4	180701025375LL
26	GASKET FNA NOZZLE	1	64CFN
27	WATER PLENUM	1	64WPCP
28	SCREW 1/4-20X1/2 NYLON	4	18070102550LL
29	1/2" RING FLAT	1	240BR100
30	FLOW STRAIGHTENER (CP)	1	64FSCP
31	SCREW 10-24X1/2	2	18032200
32	NOZZLE NOVA	1	10NA-NOV
33	NOZZLE GALAXY	1	10NA-GAL
34	NOZZLE DIANA	1	10NA-DIA
35	NOZZLE SOLACE	1	10NA-SOL
36	NOZZLE NORTH STAR	1	10NA-NOR
37	SPREADER BAR	2	185BFNA

FONT'N-AIRE PLATINUM CENTRIFUGAL PUMP COMPONENTS

1/1/09

ITEM NO.	PART NUMBER	DESCRIPTION	PRICE
1	MOTOR	SEE MOTOR PRICE SHEET (pg. 002)	0.00
2	58152553905	MOTOR LEAD (3W)	60.00
3	15PVC12	1/2" PVC TUBE 15"	5.00
4	04MMFAIM	MOTOR MOUNT	268.00
5	70PGFNACP	PROP SHROUD	8.00
6	85SP9	SPACER 9"	30.00
7	18079025	FLAT WASHER 5/16	0.20
8	18078500	NUT, NYLON LOCK 5/16-24	0.40
9	22FABIM	FLOAT ARM BRACKET	70.00
10	15JBIM	JUNCTION BOX	26.00
11	15CN-32681	CONNECTOR BH MALE	70.00
12	183182837	SCREW, #8X3/8" PHILLIPS TRUSS HD.	0.20
13	15JBL-FNA	LID, JUNCTION BOX	5.00
14	183182837	SCREW #8X3/8" PHILLIPS TRUSS HD.	0.20
15	64PH-PIMG	PUMP HOUSING	90.00
16	64PHG2	GASKET, PUMP HOUSING	8.75
17	IMPELLER	SEE IMPELLER PRICE SHEET (pg. 003)	62.00
18	181024250	SCREW, 10-24 X 2-1/2	3.35
19	18071NM10	NUT, LOCK, 10-24	0.50
20	64PR-PIMG	PUMP RETURN	90.00
21	64PRG2	GASKET, PUMP RETURN	8.75
22	64PRL-PIMG	PUMP LID	65.00
23	18079020	FLAT WASHER 1/4"	0.20
24	18101025275LL	SCREW, HHCS, 1/4-20X2-3/4"w/lock	2.85
25	18101025375L	SCREW, 1/4-20 X 3-3/4 W/LOCK	3.90
26	64GFN	GASKET, FNA NOZZLE	6.75
27	64WPCP	WATER PLENUM	26.00
28	1810102550LL	SCREW, 1/4-20X1/2 NYLON	2.30
29	29OR147	"O" RING #147	1.60
30	64FSCP	FLOW STRAIGHTNER (CP)	7.75
31	18032200	SCREW, 10-24X1/2	0.20
32	67MPVCNOV	NOZZLE, NOVA, PVC	128.00
33	67MPVCGAL	NOZZLE, GALAXY, PVC	128.00
34	67MPVCDI	NOZZLE, DIANA, PVC	128.00
35	67MPVCSOL	NOZZLE, SOLACE, PVC	128.00
36	67MPVCNST	NOZZLE, NORTH STAR, PVC	128.00
37	18SBFNA	SPREADER BAR	25.00

FONT'N-AIRE PLATINUM
CENTRIFUGAL PUMP SUB. ASSY.

1/1/09

PART NO.	DESCRIPTION	PRICE
90DSA-FNASF	DRIVE STRUCTURE FNA ASSY, SF (ITEMS 3, 4 & 6-14 & 23-25)	700.00
90CPA2	CENTRIFUGAL PUMP ASSY. 2HP (ITEMS 5, 15, 16, 17 & 20-25)	370.00
90CPA3	CENTRIFUGAL PUMP ASSY. 3HP (ITEMS 5, 15, 16, 17 & 20-25)	370.00
90CPA5	CENTRIFUGAL PUMP ASSY. 5HP (ITEMS 5, 15, 16, 17 & 20-25)	370.00
90NAPVCDIA	DIANA NOZZLE ASSY. W/"O" RING & SCREWS PVC	130.00
90NAPVCGAL	GALAXY NOZZLE ASSY. W/"O" RING & SCREWS & SPACERS, PVC	130.00
90NAPVCNOR	NORTH STAR NOZZLE ASSY. W/"O" RING & SCREWS, PVC	130.00
90NAPVCNOV	NOVA NOZZLE ASSY. W/"O" RING & SCREWS, PVC	130.00
90NAPVCSOL	SOLACE NOZZLE ASSY. W/"O" RING & SCREWS, PVC	130.00
90WPA	WATER PLENUM ASSEMBLY (ITEMS 26, 27, 28 & 30)	50.00
90MLA4	MOTOR LEAD ASSY, 3W, W/PVC & WIRE NUTS	70.00
90FA40	FLOAT 40"	385.00
94RC	ROCK COVER	632.00

FONT'N-AIRE PLATINUM
 CENTRIFUGAL PUMP
 POWER DRIVE ASSEMBLIES

1/1/09

P/N	DESCRIPTION	PRICE
90CP202301	CENTRIFUGAL PUMP, 2.0, 230, 1 (PD)	2,270.00
90CP302301	CENTRIFUGAL PUMP, 3.0, 230, 1 (PD)	2,470.00
90CP502301	CENTRIFUGAL PUMP, 5.0, 230, 1 (PD)	2,700.00
90CP302303	CENTRIFUGAL PUMP, 3.0, 230, 3 (PD)	2,470.00
90CP502303	CENTRIFUGAL PUMP, 5.0, 230, 3 (PD)	2,700.00
***NOTE: ASSEMBLY INCLUDES MOTOR, DRIVE STRUCTURE, PUMP & NOZZLE OF YOUR CHOICE (ITEMS 1-37)		
	LESS, FLOAT, WIRE & CONTROLS	

FONT'N-AIRE PLATINUM
FRANKLIN MOTORS

1/1/09

PART NUMBER	DESCRIPTION	PRICE
4922430188	2 HP., 230 VOLT, 1 PH., 60 Hz., SAND FIGHTER	950.00
4922430288	3 HP., 230 VOLT, 1 PH., 60 Hz., SAND FIGHTER	1,150.00
4922430388	5 HP., 230 VOLT, 1 PH., 60 Hz., SAND FIGHTER	1,350.00
4923431688	3 HP., 230 VOLT, 3 PH., 60 Hz, SAND FIGHTER	1,150.00
4923431788	5 HP., 230 VOLT, 3 PH., 60 Hz, SAND FIGHTER	1,350.00

FONT'N-AIRE PLATINUM CONTROL PANELS

1/1/09

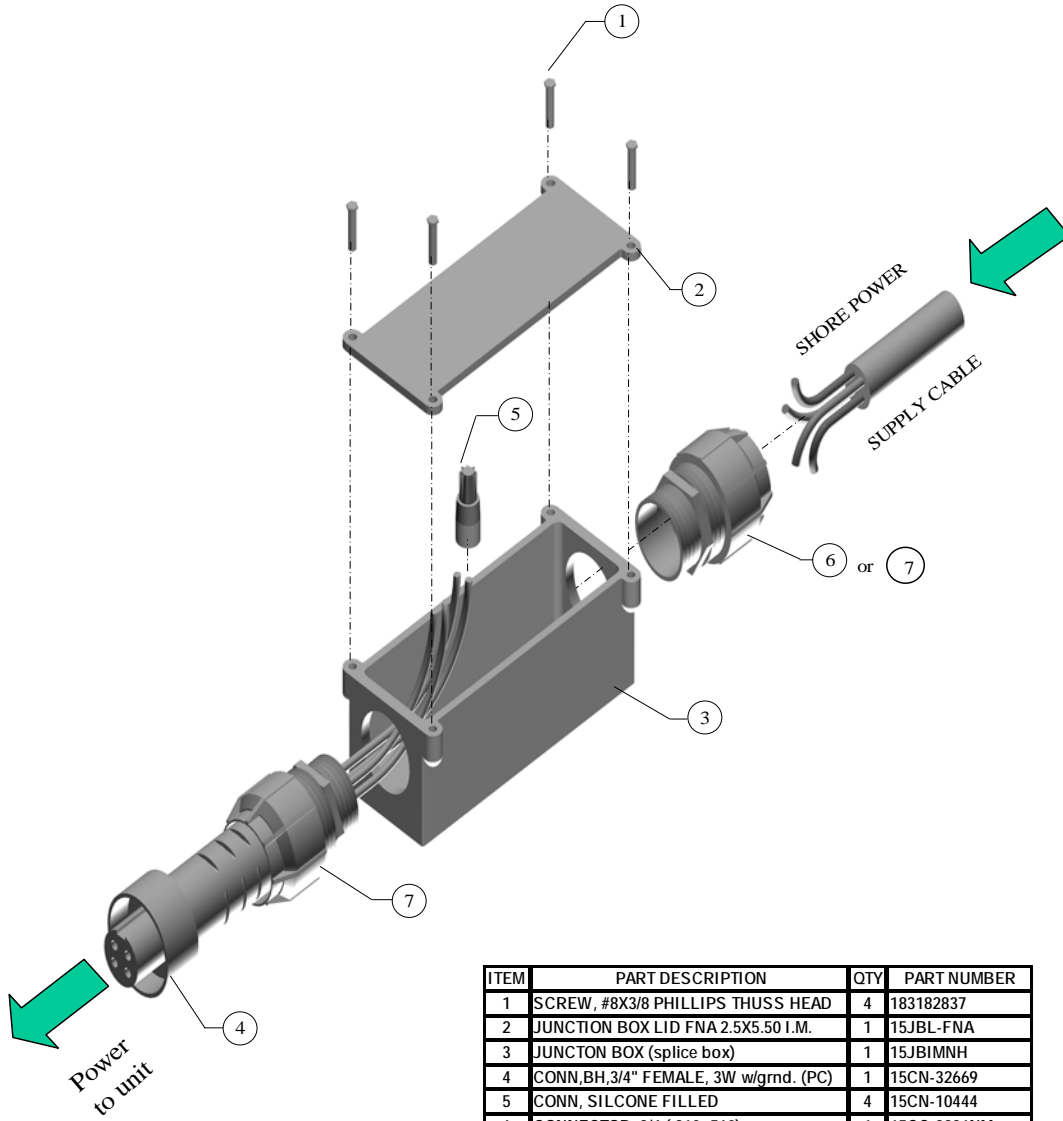
PART NUMBER	DESCRIPTION	PRICE
94ECP22301	CONTROL PANEL, ETL, 2HP, 230V, 1PH	1,500.00
94ECP32301	CONTROL PANEL, ETL, 3HP, 230V, 1PH	1,875.00
94ECP52301	CONTROL PANEL, ETL, 5HP, 230V, 1PH	2,235.00
94ECP32303	CONTROL PANEL, ETL, 3HP, 230V, 3PH	1,875.00
94ECP52303	CONTROL PANEL, ETL, 5HP, 230V, 3PH	2,235.00

FONT'N-AIRE PLATINUM CONTROL PANEL COMPONENTS

1/1/09

PART NUMBER	DESCRIPTION	PRICE
15CB-VJ1614HW	ENCLOSURE 16 X 14	415.00
15A16P14	MOUNTING PLATE, COMPONENT	95.00
15TS-M221-3	TIME CLOCK, 230 VOLT	140.00
15TMP-A4511B	MOUNTING PLATE, TIMER	15.00
15KSHC1024	KELLUM 1/2"	15.00
90GFCI44760	EQUIPMENT LOSS INTERRUPTOR, 230V	130.00
15TB11512017	TERMINAL BLOCK, BODY	3.90
15TBES118368	TERMINAL BLOCK, END SECTION	1.00
15TBES10300206	TERMINAL BLOCK, END STOP	1.80
1 PHASE ONLY		
5828230181	CONTROL BOX (FRANKLIN) 2/230/1	265.00
5828230281	CONTROL BOX (FRANKLIN) 3/230/1	335.00
5828211381	CONTROL BOX (FRANKLIN) 5/230/1	475.00
3 PHASE ONLY		
15LBSR30	DISC. SWITCH 3ph	210.00
15SM200-5	SHAFT	30.00
15HMSR	DISCONNECT SWITCH	105.00
15F-ATDR4	FUSE 4 AMP.	15.00
15F-ATDR6	FUSE 6 AMP.	15.00
15F-ATDR7	FUSE 7 AMP.	15.00
15F-ATDR10	FUSE 10 AMP.	15.00
15F-ATDR12	FUSE 12 AMP.	15.00
15F-ATDR20	FUSE 20 AMP.	15.00
15C3RT1025	CONTACTOR, 240-VOLT, COIL	225.00
15R-26-1KBO	RELAY, 3hp/230	165.00
15R-26-4BBO	RELAY, 5hp/230	165.00
90TB1PH	TERMINAL BLOCK ASSY, 1 PHASE	74.35
90TB3PH	TERMINAL BLOCK ASSY, 3 PHASE	45.00

SPLICE BOX ASSEMBLY
90SPBA3W
FOR 3 WIRE MOTOR



ITEM	PART DESCRIPTION	QTY	PART NUMBER
1	SCREW, #8X3/8 PHILLIPS THUSS HEAD	4	183182837
2	JUNCTION BOX LID FNA 2.5X5.50 I.M.	1	15JBL-FNA
3	JUNCTION BOX (splice box)	1	15JBIMNH
4	CONN,BH,3/4" FEMALE, 3W w/gmd. (PC)	1	15CN-32669
5	CONN, SILCONE FILLED	4	15CN-10444
6	CONNECTOR, 3/4 (.310-.560)	1	15CC-2931NM
7	CONNECTOR, 3/4 (.500-.750)	1	15CC-2932NM

FONT'N-AIRE PLATINUM WIRE ASSEMBLIES

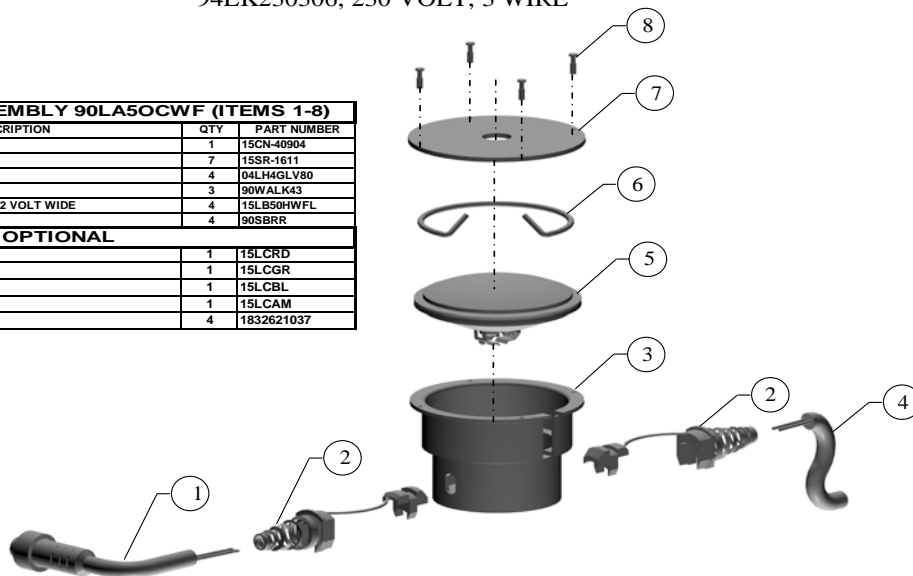
1/1/09

PART NUMBER	DESCRIPTION	PRICE
90WA10012BH	WIRE ASSY., 100', 12/4 SJEOW, w/BH CONN. & SPLICE BOX	385.00
90WA15012BH	WIRE ASSY., 150', 12/4 SJEOW, w/BH CONN. & SPLICE BOX	497.50
90WA20012BH	WIRE ASSY., 200', 12/4 SJEOW, w/BH CONN. & SPLICE BOX	610.00
90WA25012BH	WIRE ASSY., 250', 12/4 SJEOW, w/BH CONN. & SPLICE BOX	722.50
90WA30012BH	WIRE ASSY., 300', 12/4 SJEOW, w/BH CONN. & SPLICE BOX	835.00
90WA35012BH	WIRE ASSY., 350', 12/4 SJEOW, w/BH CONN. & SPLICE BOX	947.50
90WA40012BH	WIRE ASSY., 400', 12/4 SJEOW, w/BH CONN. & SPLICE BOX	1,060.00
90WA10010BH	WIRE ASSY., 100', 10/4 SEOW, w/BH CONN. & SPLICE BOX	510.00
90WA15010BH	WIRE ASSY., 150', 10/4 SEOW, w/BH CONN. & SPLICE BOX	705.00
90WA20010BH	WIRE ASSY., 200', 10/4 SEOW, w/BH CONN. & SPLICE BOX	900.00
90WA25010BH	WIRE ASSY., 250', 10/4 SEOW, w/BH CONN. & SPLICE BOX	1,095.00
90WA30010BH	WIRE ASSY., 300', 10/4 SEOW, w/BH CONN. & SPLICE BOX	1,290.00
90WA35010BH	WIRE ASSY., 350', 10/4 SEOW, w/BH CONN. & SPLICE BOX	1,485.00
90WA40010BH	WIRE ASSY., 400', 10/4 SEOW, w/BH CONN. & SPLICE BOX	1,680.00
	SEE SPLICE BOX ASSEMBLY, PAGE 14	
183182837	SCREW, #8X3/8 PHILLIPS TRUSS HEAD	0.20
15JBL-FNA	JUNCTION BOX LID, FNA, 2.5X5.50, I.M.	5.00
15JBIMNH	JUNCTION BOX (SPLICE BOX)	26.00
15CN-32669	CONNECTOR, BH, FEMALE, 3W W/GRND. (pc)	145.00
15CN-10444	CONNECTOR, SILICONE FILLED	2.50
15CC-2931NM	CORD CONNECTOR, 3/4" (.310-.560) (FOR 12/4 WIRE)	15.00
15CC-2932NM	CORD CONNECTOR, 3/4" (.500-.750) (FOR 10/4 WIRE)	15.00
90CN32669	FEMALE BH CONN. ASSY. W/WIRE NUTS	155.00
90SPBA3W	SPLICE BOX ASSY., w/BH CONN.	185.00
15SJEOW12-4	WIRE, 12/4, SJEOW (price per ft.)	2.95
15SEOW10-4	WIRE, 10/4, SEOW (price per ft.)	4.90

LIGHT KIT ASSEMBLY PARTS LIST
94LK230306, 230 VOLT, 3 WIRE

LIGHT STRING ASSEMBLY 90LA50CWF (ITEMS 1-8)

ITEM	PART DESCRIPTION	QTY	PART NUMBER
1	CONN., BH., 12-VOLT, MALE	1	15CN-40904
2	STRAIN RELIEF LIGHT HOUSING	7	15SR-1611
3	LIGHT HOUSING, GLV80	4	04LHAGLV80
4	WIRE ASSY. LIGHT KIT, 14/2 (43")	3	90WALK43
5	HALOGEN SEAL BEAM 50 WATT, 12 VOLT WIDE	4	15LB50HWFL
6	SEAL BEAM RETAINING RING, SS	4	90SBRR
OPTIONAL			
7	LENS COVER (RED)	1	15LCRD
7	LENS COVER (GREEN)	1	15LCGR
7	LENS COVER (BLUE)	1	15LCBL
7	LENS COVER (AMBER)	1	15LCAM
8	LENS RETAINING FASTNER	4	1832621037



LIGHT TRANSFORMER ASSEMBLY 90TXA230306 (ITEMS 1-12)

1	TRANSFORMER PACK, 230-12, 3W	1	90TP230306
2	CONN., BH., 3/4" DOUBLE ENDED	1	15CN-6F020
3	PHOTO CELL SOCKET	1	15PC-K122
4	GASKET, WATER SHIELD	1	29GWSC
5	PHOTO CELL	1	15PC5007S
6	WATER SHIELD COVER	1	04WSC
7	WASHER, 1/4", FLAT	4	18079020
8	SCREW, HHCS, 1/4-20X1/2	4	1810102550LL
9	POWER PACK MOUNTING BRACKET	1	15MBLT
10	SCREW, 1/4-20X1/2" PHILLIPS HEAD	4	1830622550LL
11	WASHER, 1/4", FLAT	5	18079020
12	SCREW, 1/4-20X3/4", PHILLIPS HEAD	1	1830622575LL

